



GEORGETOWN APARTMENTS

*Minutes from Theatres,
Hospitals, & I-10*

**Live to Love, Love to Live
at Georgetown.**

524 West Tharpe Street
Tallahassee, Florida 32303

850.385.5821 OFFICE • 850.422.1735 FAX

EMAIL: georgetown@southgroup.com

www.SouthGroupApartments.com

Resident Online Payments at

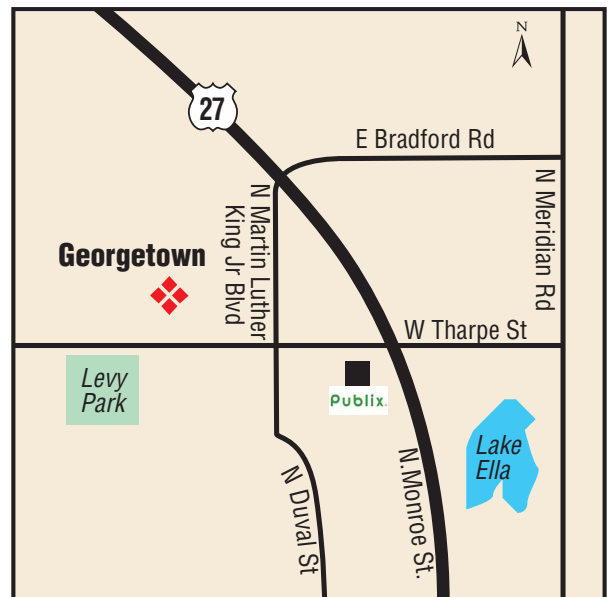
<http://SouthGroup.ResidentPortal.com>

Welcome to GEORGETOWN APARTMENTS, a community proudly offering beauty and old world charm, while affording our residents modern day style and convenience. As you stroll through our courtyard, take a moment to admire the majestic trees and flowering bushes. Imagine an afternoon picnic in the shade or a refreshing dip in our sparkling swimming pool.

Enjoy walking to schools, shopping and state offices, while driving only minutes to restaurants, theatres, hospitals and Interstate 10. When you return, know that Georgetown Apartments will be the quiet, comfortable place you're happy to call home. Georgetown Apartments may be located at the edge of hustle and bustle, but it is truly in a world of its own.



Enjoy walking to schools, shopping and state offices, while driving only minutes to restaurants, theatres, hospitals and Interstate 10. Georgetown Apartments may be located at the edge of hustle and bustle, but it is truly in a world of its own.

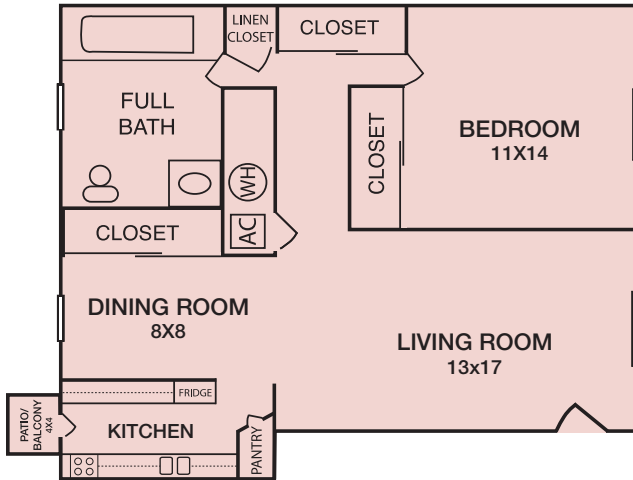


10 Great Apartment Locations Covering Tallahassee!
SouthGroupApartments.com



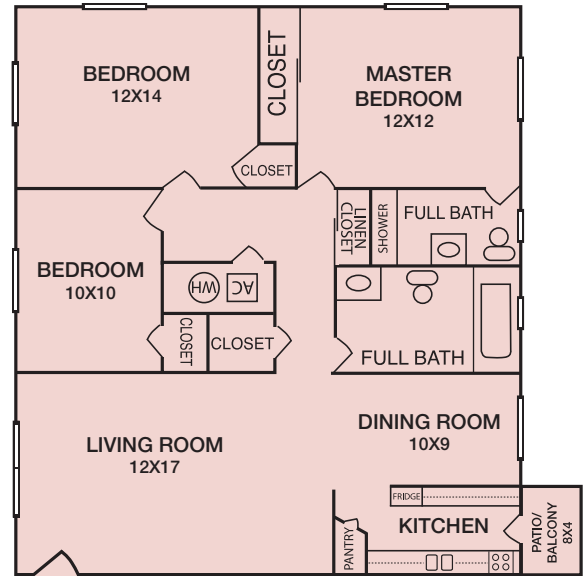


524 West Tharpe Street • 850.385.5821 OFFICE



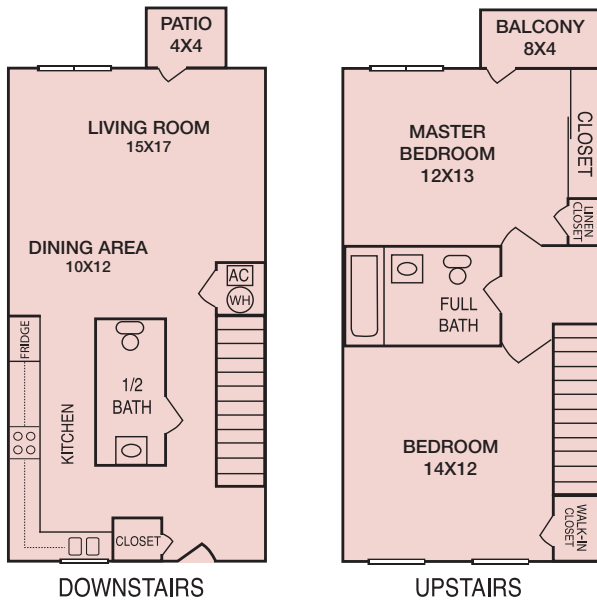
One Bedroom / One Bath Apartment
775 sq. ft*

\$ _____



Three Bedroom / Two Bath Apartment
1125 sq. ft*

\$ _____



Two Bedroom / One and One Half Bath Townhouse
1100 sq. ft*

\$ _____

Property / Apartment Features:

- Great Location
- Central Heat & Air
- Swimming Pool
- On-site Laundry Facility
- 24 Hour Emergency Maintenance
- Senior Citizen Discount
- 7 and 12 month Leases

Security Deposit	\$ <u>300.00</u>	Pet Fee	\$ <u>300.00</u>
Application Fee (per adult)	\$ <u>45.00</u>	(includes \$75.00 non-refundable pet fee)	

GEORGETOWN pays for water, sewerage and monthly pest control.

*All square feet and dimensions are approximate and may vary by apartment.